



[www.naturaldata.com](http://www.naturaldata.com)

**NOAH™ FBX Adapter**



# **FBX Adapter Device Driver Update Guide**

## Copyright and Trademarks

**Natural Data** and **NOAH™** and the **Natural Data Logo** are registered trademarks of Natural Data Inc.

©Natural Data Inc. 2000 - 2005

Microsoft®, Windows NT®, Windows 2000®, Windows XP®, Windows 2003 Server®, Microsoft Word®, Microsoft Windows®, Microsoft Excel®, Microsoft Outlook® and other names of Microsoft products are registered trademarks of the Microsoft Corporation.

Other products mentioned may be trademarks or registered trademarks of their respective companies.

XPP License: Indiana University Extreme! Lab Software License Version 1.1.1

Copyright (c) 2002 Extreme! Lab, Indiana University. All rights reserved.

Redistribution and use in source and binary forms, with or without modification, are permitted provided that the following conditions are met:

Redistributions of source code must retain the above copyright notice, this list of conditions and the following disclaimer.

Redistributions in binary form must reproduce the above copyright notice, this list of conditions and the following disclaimer in the documentation and/or other materials provided with the distribution.

The end-user documentation included with the redistribution, if any, must include the following acknowledgment: "This product includes software developed by the Indiana University Extreme! Lab (<http://www.extreme.indiana.edu/>)." Alternately, this acknowledgment may appear in the software itself, if and wherever such third-party acknowledgments normally appear.

The names "Indiana University" and "Indiana University Extreme! Lab" must not be used to endorse or promote products derived from this software without prior written permission. For written permission, please contact <http://www.extreme.indiana.edu/>.

Products derived from this software may not use "Indiana University" name nor may "Indiana University" appear in their name, without prior written permission of the Indiana University.

THIS SOFTWARE IS PROVIDED "AS IS" AND ANY EXPRESSED OR IMPLIED WARRANTIES, INCLUDING, BUT NOT LIMITED TO, THE IMPLIED WARRANTIES OF MERCHANTABILITY AND FITNESS FOR A PARTICULAR PURPOSE ARE DISCLAIMED. IN NO EVENT SHALL THE AUTHORS, COPYRIGHT HOLDERS OR ITS CONTRIBUTORS BE LIABLE FOR ANY DIRECT, INDIRECT, INCIDENTAL, SPECIAL, EXEMPLARY, OR CONSEQUENTIAL DAMAGES (INCLUDING, BUT NOT LIMITED TO, PROCUREMENT OF SUBSTITUTE GOODS OR SERVICES; LOSS OF USE, DATA, OR PROFITS; OR BUSINESS INTERRUPTION) HOWEVER CAUSED AND ON ANY THEORY OF LIABILITY, WHETHER IN CONTRACT, STRICT LIABILITY, OR TORT (INCLUDING NEGLIGENCE OR OTHERWISE) ARISING IN ANY WAY OUT OF THE USE OF THIS SOFTWARE, EVEN IF ADVISED OF THE POSSIBILITY OF SUCH DAMAGE.

Printed in Canada.

### **FBX Adapter Device Driver Update Guide**

Natural Data Inc. Fax Solutions

October 2005

Part No. 02463001-00

Natural Data Inc.

# FBX Adapter Device Drivers



## Index

<b>1: FBX ADAPTER DEVICE DRIVERS.....</b>	<b>3</b>
OX16PCI954 PCI UARTs & OX16PCI95x PCI BRIDGE .....	3
PCI COMMUNICATION PORT .....	3
MUTLTI TECH SYSTEMS MODEMS .....	3
<b>2: HOW TO DETERMINE WHAT VERSION OF DEVICE DRIVERS ARE INSTALLED. ....</b>	<b>4</b>
CHECKING OX16PCI954 PCI UARTs DEVICE DRIVER VERSIONS .....	4
CHECKING OX16PCI95x PCI BRIDGE DEVICE DRIVER VERSIONS .....	4
CHECKING PCI COMMUNICATIONS PORT DEVICE DRIVER VERSIONS .....	5
CHECKING MULTITECH SYSTEMS MODEM DEVICE DRIVER VERSIONS .....	5
<b>4: UPDATING FBX ADAPTER DEVICE DRIVERS.....</b>	<b>6</b>
UPDATING THE OX16PCI954 PCI UARTs DEVICE .....	6
UPDATING THE OX16PCI95x PCI BRIDGE DEVICE .....	10
UPDATING THE PCI COMMUNICATIONS PORT DEVICES .....	10
UPDATING THE MULTITECH SYSTEMS MODEM DEVICES .....	11



## 1: FBX Adapter Device Drivers

There are four possible types of devices installed for each FBX Adapter. These are;

- OX16PCI954 PCI UARTs devices
- OX16PCI95x PCI Bridge devices
- PCI Communication Port devices
- MutlitiTech Systems Modems devices

### **OX16PCI954 PCI UARTs & OX16PCI95x PCI Bridge**

**Note:** 3 Port FBX Adapters have one OX16PCI954 PCI UARTs device  
6 Port FBX Adapters have one OX16PCI954 PCI UARTs device and one OX16PCI95x PCI Bridge device.

### **PCI Communication Port**

**Note:** 3 port adapters will have 4 PCI Communication Port devices installed and  
6 port adapters will have 8 PCI Communication Port devices installed.

### **MutlitiTech Systems Modems**

**Note:** 3 port adapters will have 3 MultiTech Systems modems devices installed and  
6 port adapters will have 6 MultiTech Systems modems devices installed.

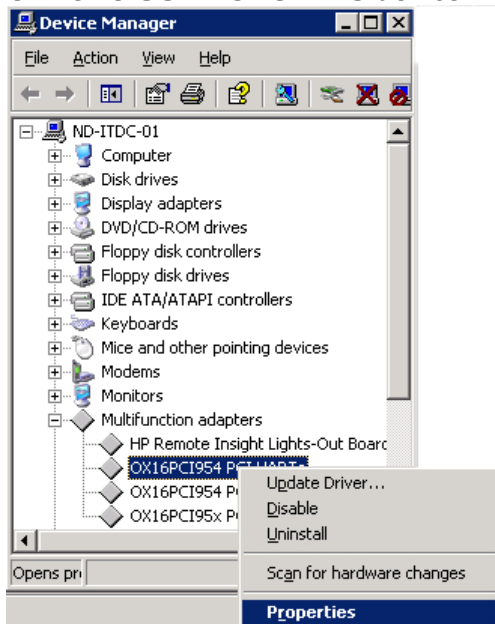
To view and download the latest version of FBX Adapter device drivers go to the [www.naturaldata.com/drivers.htm](http://www.naturaldata.com/drivers.htm).

## 2: How to determine what version of Device Drivers are installed.

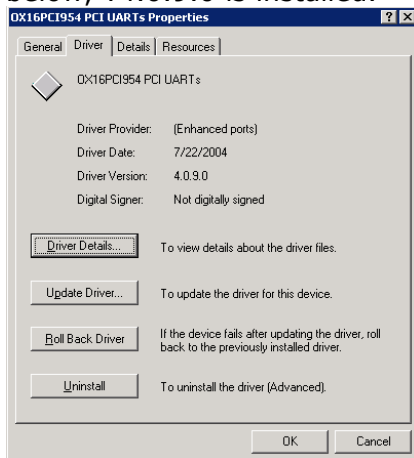
1. Go to **Start/Control Panel** and select **System** to display **System Properties**
2. Select the **Hardware tab** and then select the **Device Manager Button**.

### Checking OX16PCI954 PCI UARTs device Driver Versions

3. In Device Manager, select **Multifunction adapters** and then Right Click/**Properties** on the **OX16PCI954 PCI UARTs** device.



4. In the properties window, select the **Driver tab** to view the driver version. In the example below, v4.0.9.0 is installed.

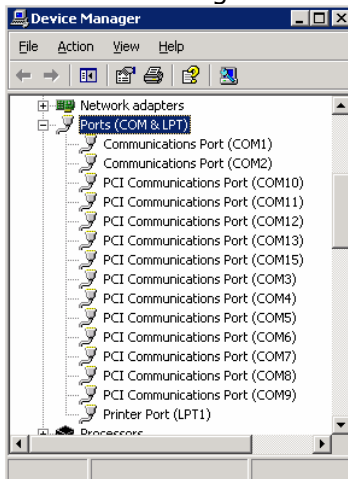


### Checking OX16PCI95x PCI Bridge device Driver Versions

5. In Device Manager, select **Multifunction adapters** and then Right Click/**Properties** on the **OX16PCI954 PCI UARTs** device.
6. In the properties window, select the **Driver tab** to view the driver version.

### Checking PCI Communications Port device Driver Versions

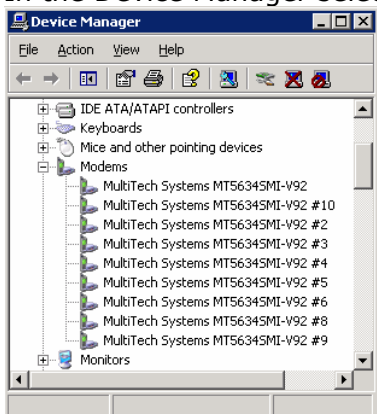
7. In Device Manager select Ports (COM & LPT).



8. Select one of the **PCI Communications Port** in the list; Right Click, and select **Properties**.
9. In the properties window, select the **Driver tab** to view the driver version.

### Checking MultiTech Systems Modem device Driver Versions

10. In the Device Manager select Modems.



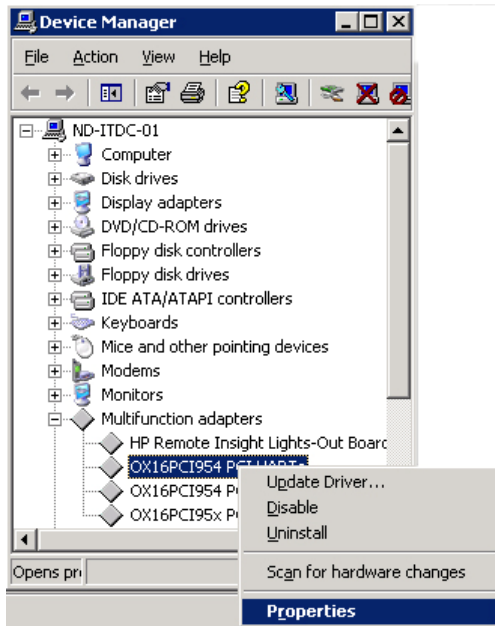
11. Select one of the **Multitech Systems** modem in the list; Right Click, and select **Properties**.
12. In the properties window, select the **Driver tab** to view the driver version.

## 4: Updating FBX Adapter Device Drivers

1. Download the latest FBX Adapter Device Drivers at [www.naturaldata.com/drivers.htm](http://www.naturaldata.com/drivers.htm).
2. Go to Start/**Control Panel** and select **System** to display System Properties
3. Select the **Hardware tab** and then select the **Device Manager button**.

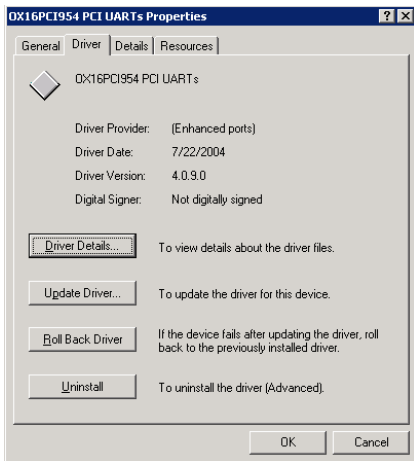
### Updating the OX16PCI954 PCI UARTs Device

4. In Device Manager, select **Multifunction adapters** and then Right Click/**Properties** on the **OX16PCI954 PCI UARTs** device.



**Note:** 3 Port FBX Adapters only have one OX16PCI954 PCI UARTs device, whereas 6 Port FBX Adapters have both an OX16PCI954 PCI UARTs device and a OX16PCI95x PCI Bridge device.

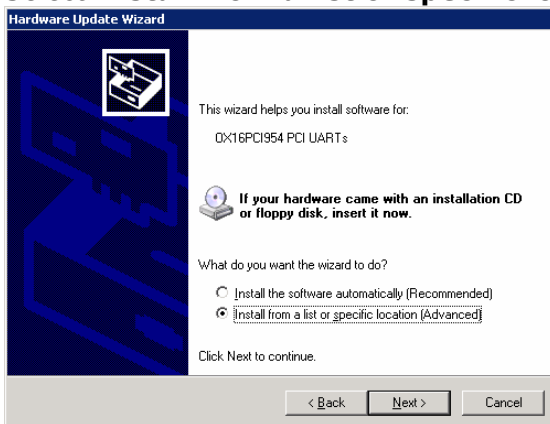
5. In the properties window, select the **Driver tab** and then the **Update Driver button** to Display the Hardware Update Wizard.



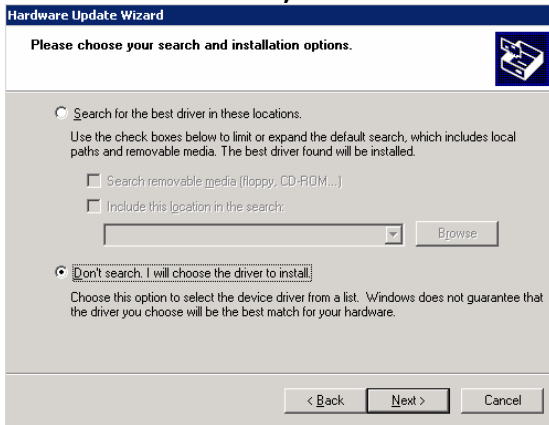
6. In the Hardware Update Wizard, select **No, not this time** and press **Next**.



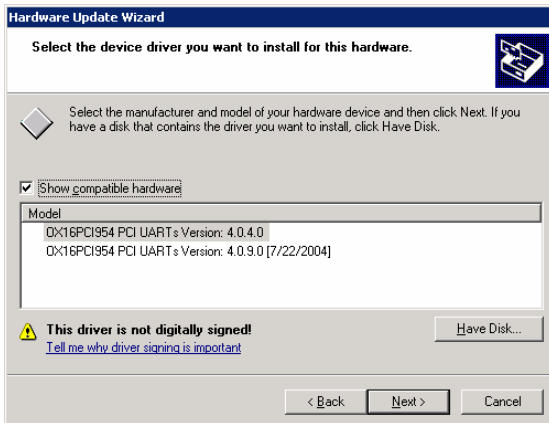
7. Select **Install from a list or specific location** and press **Next**.



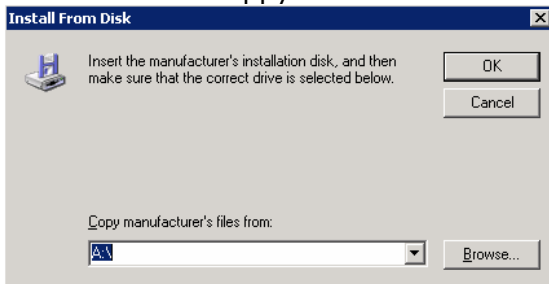
8. Select **Don't search, I will choose the driver to install** and select **Next**.



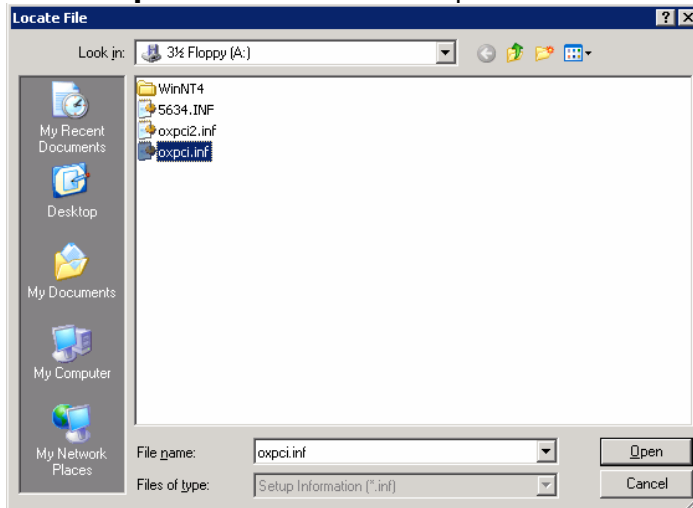
9. Select **Have Disk**.



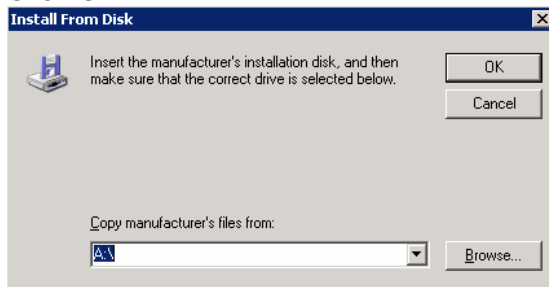
10. Select Browse to find the Location where the drivers are stored. In the example below the files were on a floppy.



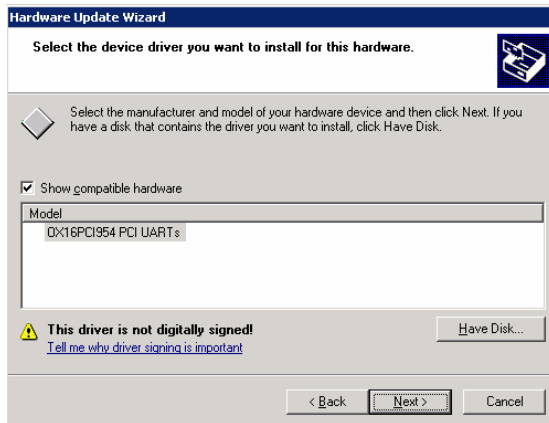
11. Select **oxpci.inf** and select the Open button.



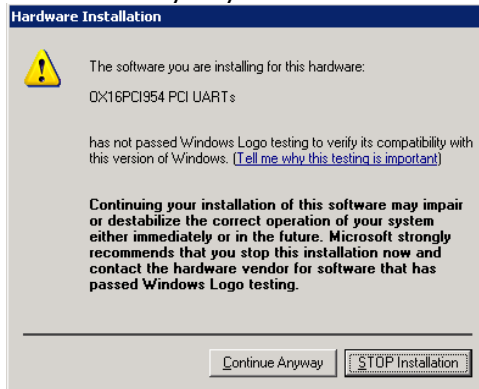
12. Click OK.



13. Click Next



14. In the next window, Microsoft will mention that the driver is not digitally signed. Select Continue Anyway and the driver will be installed.



15. On the next window select Finish to complete the driver install.

16. If more than one FBX Adapter is installed, repeat Steps 3 to 14 for any other **OX16PCI954 PCI UARTs** devices installed.

### Updating the OX16PCI95x PCI Bridge Device

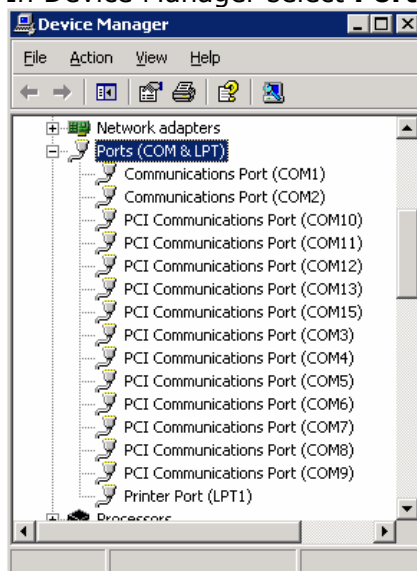
17. If any **6 Port FBX Adapters** are installed, steps 3 to 14 will have to be repeated for any **OX16PCI95x PCI Bridge** devices installed.

### Updating the PCI Communications Port Devices

The number of PCI Communications Ports installed depends on whether 3 port or 6 port FBX Adapters are installed.

**Note:** 3 port adapters will have 4 PCI Communication Port devices installed and 6 port adapters will have 8 PCI Communication Port devices installed.

18. In Device Manager select **Ports (COM & LPT)**.



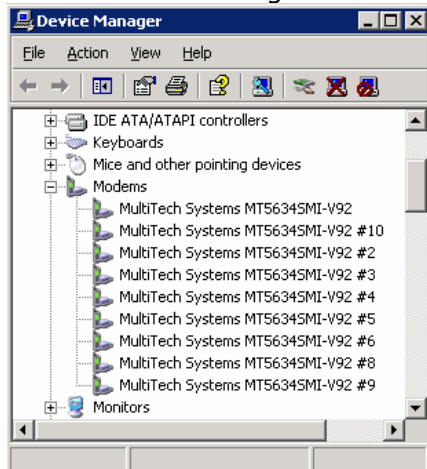
19. To update the PCI Communications Port Drivers select the first **PCI Communications Port** in the list; Right Click, and select **Properties**.
20. In the properties window, select the **Driver tab** and then the **Update Driver button** to Display the Hardware Update Wizard.
21. In the Hardware Update Wizard, select **No, not this time** and press **Next**.
22. Select **Install from a list or specific location** and press **Next**.
23. Select **Don't search, I will choose the driver to install** and select **Next**.
24. Select **Have Disk**.
25. Select **Browse** to find the Location where the drivers are stored.
26. Select **oxpci2.inf** and select the Open button.
27. Click **OK**.
28. Click **Next**.
29. In the next window, select **Continue Anyway** and the driver will be installed.
30. Select **Finish** to complete the driver install.
31. Repeat Steps 18 to 29 for all other **PCI Communications Port** devices installed.

## Updating the MultiTech Systems Modem Devices

Depending on the Model of FBX Adapter installed, there are two Models of modems that may be installed, MultiTech Systems MT3334SMI modems and or MultiTech Systems MT5634SMI modems.

**Note:** 3 port adapters will have 3 MultiTech Systems modems devices installed and 6 port adapters will have 6 MultiTech Systems modems devices installed.

32. In the Device Manager select **Modems**.



33. To update the Modem Drivers select the first **Multitech Systems** modem in the list; Right Click, and select **Properties**.
34. In the properties window, select the **Driver tab** and then the **Update Driver button** to Display the Hardware Update Wizard.
35. In the Hardware Update Wizard, select **No, not this time** and press **Next**.
36. Select **Install from a list or specific location** and press **Next**.
37. Select **Don't search, I will choose the driver to install** and select **Next**.
38. Select **Have Disk**.
39. Select **Browse** to find the Location where the drivers are stored.
40. Select **5634.INF** and select the **Open** button.
41. Click **OK**.
42. Click **Next**.
43. In the next window select **Continue Anyway** and the driver will be installed.
44. Select **Finish** to complete the driver install.
45. Repeat Steps 17 to 28 for all other **MultiTech Systems modem** devices installed.

**Notes:**

